

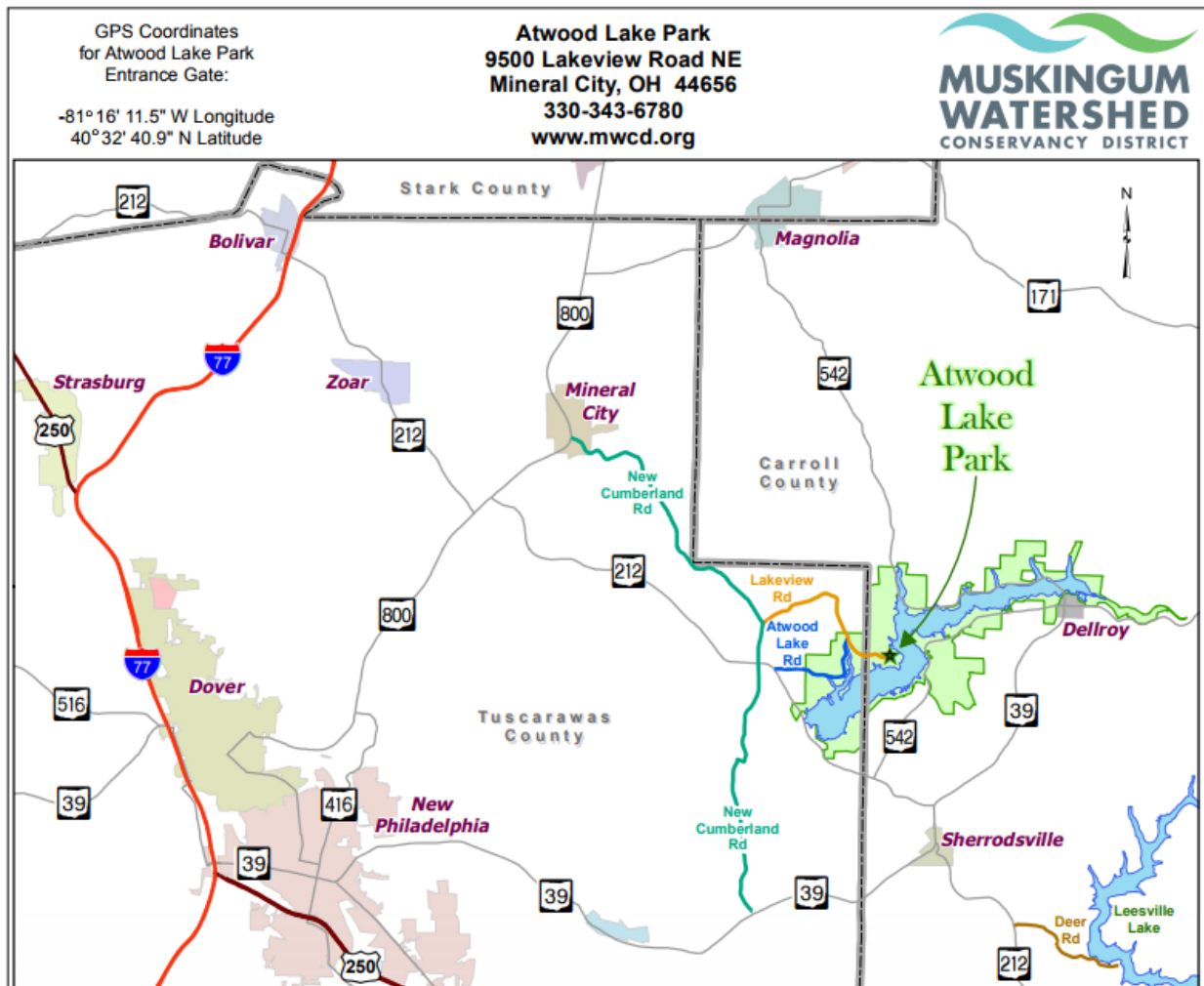
PRELIMINARY INFORMATION – This file will be updated as more details are worked out.

GMC Great Lakers Rally Details

Dates: Thursday July 12, 2018 thru Sunday July 15, 2018

Location: Atwood Lake Park, 9500 Lakeview Road NE, Mineral City, OH 44656

Atwood Lake is in the Muskingum Watershed. See www.mwcd.org for lots of information about the area.



From Columbus, OH:

- 1 - Follow I-70 East toward Wheeling
- 2 - Take exit 180B to merge onto I-77 N toward Cleveland
Travel 36.8 miles
- 3 - Take exit 81 for OH-39 E toward US-250 E/New Philadelphia
- 4 - Turn right at OH-39 E/W High Ave
Travel 1.7 miles
- 5 - Turn left at N Broadway St
Travel 1.0 mile
- 6 - Turn right at OH-416 N/7 Miles Dr/N Broadway St
Travel 2.5 miles
- 7 - Turn right at OH-800 N
Travel 4.5 miles
- 8 - Turn right at OH-212 E
Travel 6.2 miles
- 9 - Turn left at Atwood Lake Rd
Travel 1.9 miles
- 10 - Turn right at Lakeview Rd
Follow Lakeview Road into Atwood Lake Park

Driving directions have not been verified.

Travel distances are approximate.

Maps shown are for informational purposes only.

Created: 3/10/2011
TAYLOR

From Cleveland, OH:

- 1 - Follow I-77 South to Exit 93 OH-212 Zoar/Bolivar
- 2 - Turn left at OH-212 E
Travel 2.7 miles
- 3 - Turn right at OH-212 E/Main St
Follow OH-212 E for 3.1 miles
- 4 - Turn left at OH-212 E/OH-800 N
Travel 0.4 miles
- 5 - Take the first right onto OH-212 E
Travel 6.2 miles
- 6 - Turn left at Atwood Lake Road
Travel 1.9 miles
- 7 - Turn right at Lakeview Rd
Follow Lakeview Road into Atwood Lake Park

**From Pittsburgh, PA:**

- 1 - Follow US-22 W/US-30 W toward Weirton
Travel 45.7 miles
- 2 - Take the OH-151 W exit toward Jewett/Scio
- 3 - Turn right at OH-151 W/Jewett Hopedale Rd
Travel 5.5 miles
- 4 - Turn left at Center St
Travel 0.1 miles
- 5 - Take slight right toward OH-151 W/Jewett Scio Rd
Travel 194 ft
- 6 - Continue straight onto OH-151 W/Jewett Scio Rd
Travel 11.7 miles
- 7 - Turn right at OH-212 W/Leesville Rd
Travel 2.1 miles
- 8 - Turn right at S Union St
Travel 394 ft
- 9 - At the traffic circle, continue straight onto N Union St
- 10 - Continue onto OH-212 W/Cumberland Rd SW
Travel 3.7 miles
- 11 - Turn right at Sherrod Ave
Travel 0.3 miles
- 12 - Turn right at OH-212 W/OH-39 E/N Church St
Travel 0.6 miles
- 13 - Turn left at OH-212 W/Cumberland Rd SW
Travel 4.0 miles
- 14 - Turn right at Lakeview Rd
Follow Lakeview Road into Atwood Lake Park

Atwood Lake Park Phone Number: (330) 343-6780

Check in time: ???

Check out time: ???

Hosts: Jane and Bill Michel

Cost: ??? ← Details still being developed.

Note: Ohio residents can use a Golden Buckeye card.

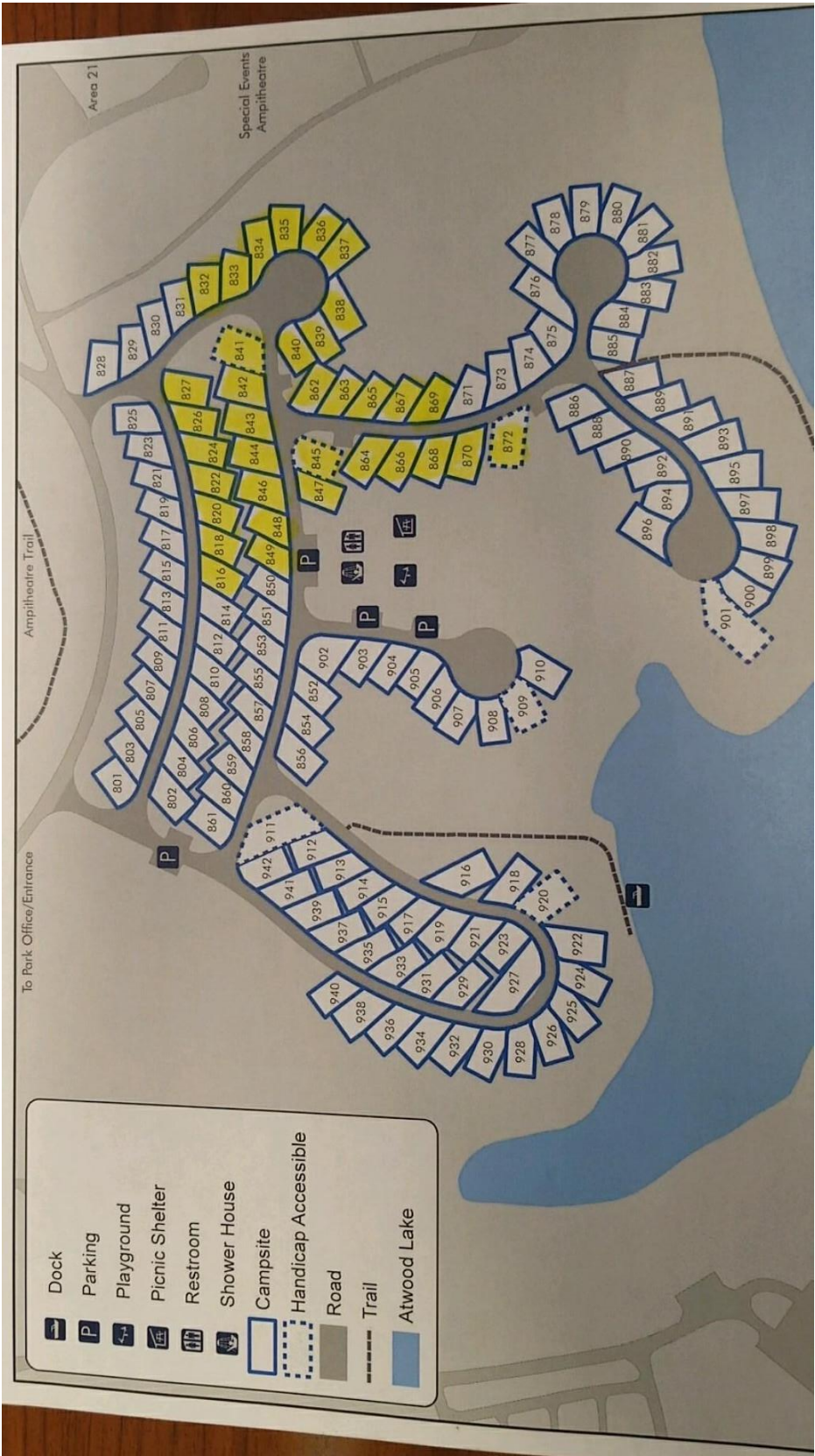
Update 4/4/18:

Make your reservations by 6/4/2018.

Ask for Gretchen when you call.

Senior rate is \$44/night

See the campground map on the next page for the campsites that we will be using. Choose one of the yellow colored sites when you make your reservations with Gretchen.



- Dock
- Parking
- Picnic Shelter
- Restroom
- Shower House
- Campsite
- Handicap Accessible
- Road
- Trail
- Atwood Lake